

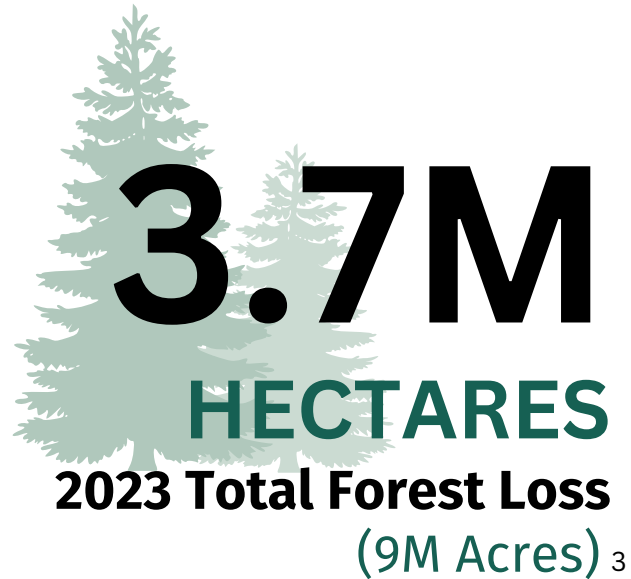
Miracle Trees



CREATED BY AMPLIPHI

THE WORLD TODAY

Rising CO2 levels and deforestation fuel climate change, biodiversity loss, and environmental challenges



3.7M
HECTARES
2023 Total Forest Loss
(9M Acres)³

Agricultural Impact:

- Temperature and precipitation changes affect crop yields
- Potential food shortages and economic instability

Deforestation:

- Increases CO2 levels, exacerbating global warming, biodiversity loss, health risks, and more

Global Warming:

- Higher CO2 levels enhance the greenhouse effect, trapping more heat and raising temperatures

Climate Change:

- Weather severity like hurricanes, droughts, and floods.

Melting Ice Caps and Glaciers:

- Warmer temperatures melt polar ice caps and glaciers, raising sea levels and diminishing polar habitats.

Human Health Risks:

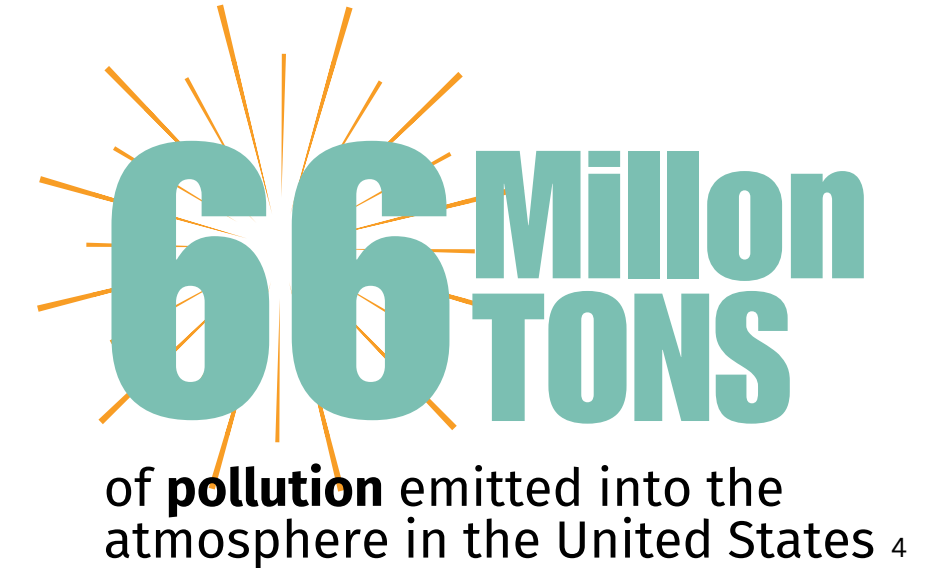
- Higher CO2 levels can worsen air pollution, spread diseases, and strain food and water resources

Ocean Acidification:

- Elevated CO2 levels are absorbed by oceans, causing acidification that harms marine life

Biodiversity Loss:

- Climate and habitat changes threaten plant and animal species



66 Million
TONS
of **pollution** emitted into the atmosphere in the United States⁴

Ocean Heat



2023
WARMEST YEAR ON RECORD
Glacier Retreat²

2023 GLOBAL AVG CO2



419.3
Parts Per Million¹

1) Weisse, M. Forest Pulse: The Latest on the World's Forests. World Resources Institute, <https://research.wri.org/gfr/latest-analysis-deforestation-trends>

2) World Meteorological Organization. "State of the Global Climate 2023." World Meteorological Organization WMO, <https://wmo.int/publication-series/state-of-global-climate-2023>

3) Lindsey, Rebecca. "Climate Change: Atmospheric Carbon Dioxide | NOAA Climate.gov." Climate.gov, <https://www.climate.gov/news-features/understanding-climate/climate-change-atmospheric-carbon-dioxide>

4) United States Environmental Protection Agency. "Air Quality - National Summary | US EPA." Environmental Protection Agency (EPA), <https://www.epa.gov/air-trends/air-quality-national-summary>



OUR VISION

A fast-growing, sustainable resource with a commitment to large-scale planting by the end of 2025

IMAGINE...

A world where **forests thrive**, where the lumber we use is not only superior in quality but also renews itself in a fraction of the time.

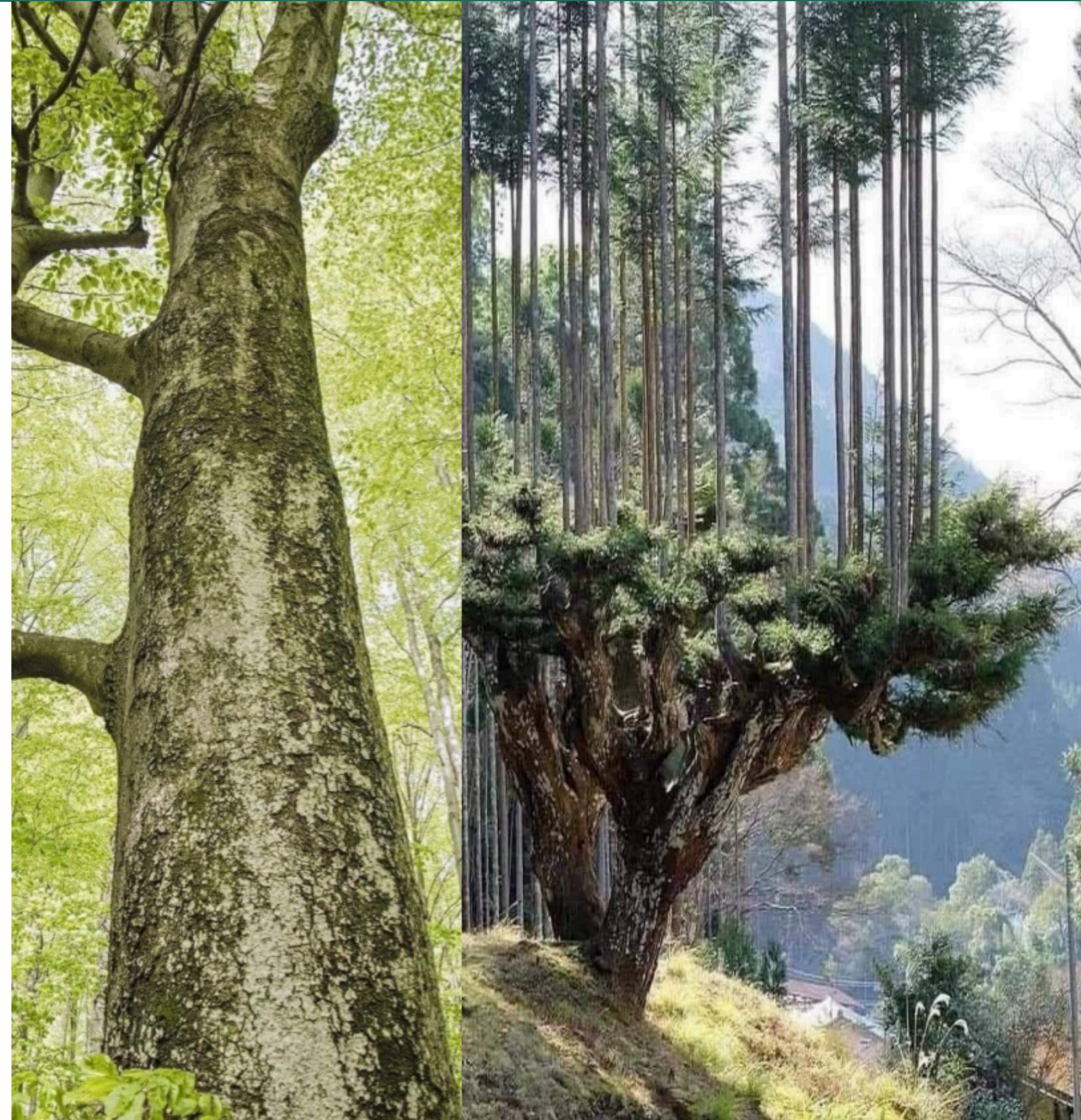
This is the promise of the **Miracle Tree**—a fast-growing, sustainable wood product that reaches full maturity in just 3 to 7 years.

With each harvest, the Miracle Tree regrows from its same root system, offering a **limitless cycle of renewal**.

This revolutionary process not only enhances agricultural landscapes but also positions us to **offset environmental impacts** in ways never before possible.

Through our bold vision and strategic partnerships, we are committed to **planting 30,000 acres of these trees by the end of 2025**.

The Miracle Tree is more than just a resource; it's a scalable and repeatable solution for a greener, **more sustainable future**.



MIRACLE TREE - BY AMPLIPHI

Revolutionary Biotech: Sustainable, superior wood from epigenetically enhanced miracle trees



YEAR 1



YEAR 2



YEAR 3

Fully grown trees in 3-7 years instead of 10-12 years!

- Epigenetically enhanced Biotech - NOT genetically engineered
- Growing renewable & sustainable lumber and wood products
- Superior wood quality & attributes
- Each time the Miracle Tree is harvested it regrows from the same root system
- Consumes **11X** more carbon dioxide, produces **6X** more oxygen, and cleans **3X** more debris from the air than regular trees



MIRACLE TREE - BY AMPLIPHI

World leaders in epigenetics, optimizing trees for maximum efficiency and resilience



20 YEARS OF EPIGENETIC TRAINING WITH 20 YEARS OF GENETIC BREEDING

Epigenetics is the study of how environmental stresses can cause changes that affect the way your genes work.



MIRACLE TREE - BY AMPLIPHI

Over 20 years of epigenetic training and epigenetic breeding in the US



The Miracle Trees



FORCEFIELDS & FREQUENCIES

Force Fields, Frequencies and other healthy stress factors cause the genes of the plants to activate and increase their maximum potential.

LIVING CULTURES & MEDIUM

Leveraging two decades of epigenetic expertise to cultivate advanced living cultures and mediums, optimizing them for superior growth and resilience.

STEM CELLS

Developing stem cells with enhanced regenerative properties through precise epigenetic breeding techniques.

BIOHACKING

BREEDING

SOIL
REMEDICATION

PRE-TREAT
SEEDS

MIRACLE TREE COMPETITIVE ADVANTAGES

The Aluminum of Lumber - Disrupting the lumber industry

WOOD ATTRIBUTES

- Stain Any Color
- Strong Hardwood (Maple/Ash)
- 1/3 Weight of Softwood (40% Stronger)
- 1/5 Weight of Hardwood
- Water & Pest Resistant
- No Warping, Twisting or Splitting
- Similar to Pressure-Treated Red Cedar
- Veneer 1/100th Inch
- Plywood is the lightest and strongest with double the insulation



Softwood (3-5 Yrs)

Plywood, Slat-boards, Chipboard-OSB Particle-Board, 2X4's, 4X4's, Fence Posts, Lumber Poles, Pole Frames



Hardwood (5-7 Yrs)

Surfboards, Wakeboards, Snowboards, Canoes, Kayaks, Pickleball Paddles



Bee and Honey Production

1 acre of trees yields 100 liters of honey per year



Biomass (Carbon Credits)

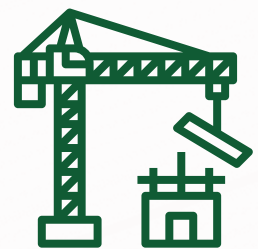
Double R-Value; burns with 2x the heat, is water-resistant, and ideal for generating electricity and heat



Medicinal Benefits

Provides neuroprotection, cardiovascular support, metabolic regulation, and antimicrobial properties from fruits, flowers, leaves, and bark

CUSTOMERS



Wood Products



Businesses, Banks, Carbon Credits



Landscapers Nurseries



Farmers + Ranchers (Land/Labor)

PARTNERS



Referral Partner



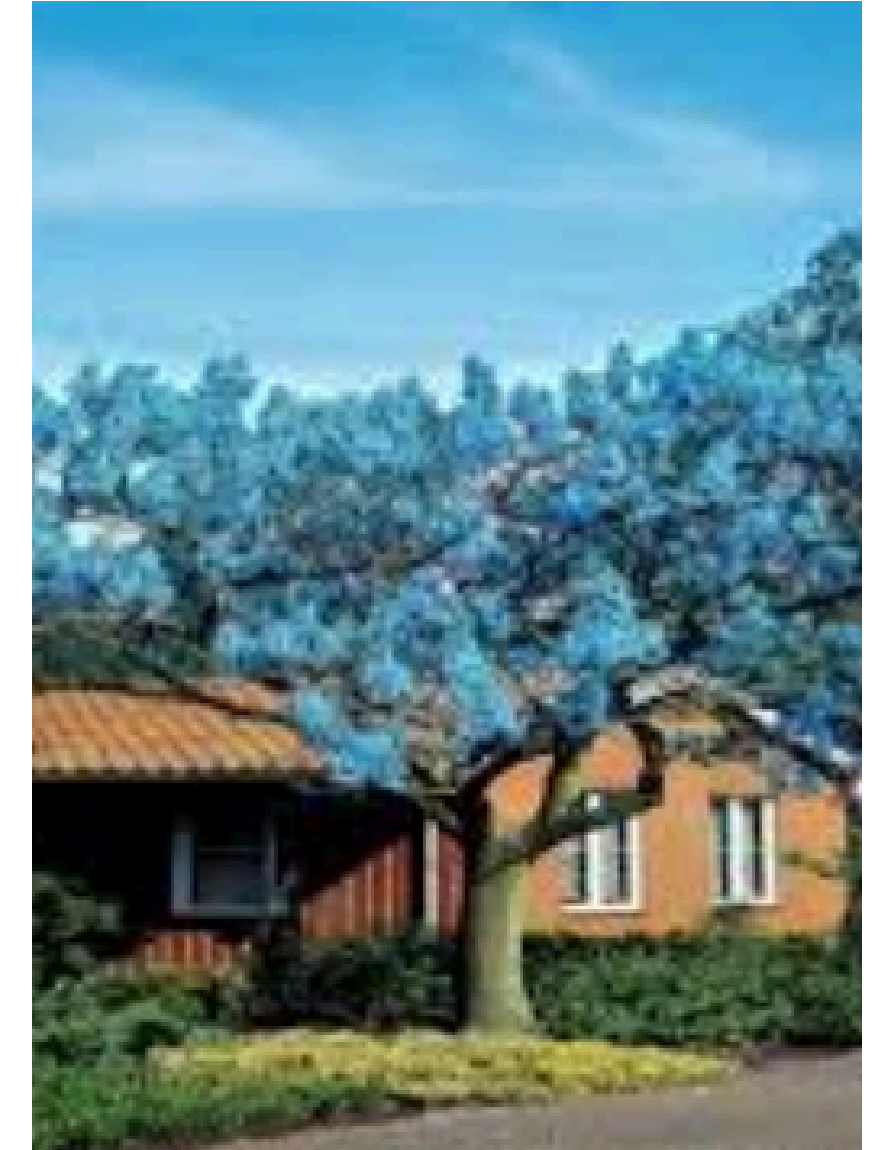
Land/Labor Partner (Greenhouse, Farmer, Land)



Financial Partner

UNITREE BLOCKCHAIN PARTNERSHIP

A blockchain investment platform revolutionizing regenerative agroforestry



THE UNITREE EXCHANGE - ONLINE INVESTMENT PLATFORM

- **Project Tokens:** Innovative digital assets that represent shares in various projects.
- **NFTs:** Utilize NFTs to represent unique assets.
- **Blockchain:** Unitree operates on a secure & transparent blockchain platform without centralized power.
- **Deposit & Withdrawal Features:** With Unitree, transacting in the cryptocurrency world is as simple as clicking a button.
- **Revenue Disbursement:** Revenue generating from the projects is dispersed among token holders and NFT owners.



MIRACLE TREE REVENUE & RETURNS

Illustrative 1,000 acre revenue potential

ESTIMATED REVENUE FROM 1,000 ACRES OF TREES

\$M for Millions

Price per tree	\$1,000	\$2,000	\$3,800*
Lumber	\$500M	\$1,000M	\$1,900M
Honey & bees	\$5.78M	\$5.78M	\$5.78M
Carbon credits	\$.75M	\$.75M	\$.75M
Total	\$507M	\$1,007M	\$1,907M

*\$3,800 is the market value for hardwood lumber

RPA BOND RETURN TRANCHEs

Investment	IRR	Return
\$500,000	25% → 3x	\$1.5 million
\$5 million	32% → 4x	\$20 million
\$50 million	38% → 5x	\$250 million
\$150 million	46% → 6.7x	\$1 billion

Higher returns for RPAs from \$5M and \$150M,
with potential for up to 6.7x return

LIBERTY CAPITAL FUND MANAGER

Proven record of successful real estate transactions and exits

MICHELE CHEN
Managing Partner



- **Consulted for lead sponsors and principals on total real estate developments worth over \$1.2 billion** at GD Commercial, SVN | First Guardian Group, and Douglas Elliman.
- **Negotiated, structured, and arranged over \$350 million in transaction sales** volume for individual and family office clients on residential and commercial projects completing due-diligence, investment analysis, and private placements.
- **Over a decade of experience in real estate private placements** through acquisitions, dispositions, and providing sound advice to investors seeking alternative investment opportunities resulting in an average of 18.2% IRR on development projects and 8.6% annual net returns on stabilized assets.
- **Strong relationships** with private equity family offices, REITs, high net worth investors, foreign investors and developers.

EDUCATION, NOTABLE PAST PRIVATE EQUITY RAISES & DEVELOPER PARTNERSHIPS:



LIBERTY CAPITAL DIRECTOR

Global change maker, entrepreneur & influencer

DASHA GORDON

Director



- **Dashama is a wellness pioneer who has reached over 150 million people** through her yoga, meditation, and wellness content, including bestselling courses, books, and media appearances.
- **Established the Bright Future Foundation**, focusing on mental health, education, and empowerment for children, contributing to global efforts for a better future and **collaborated with & supported numerous charity foundations** such as World Vision, Charitywater, Leonardo DiCaprio Foundation, Water.org, Global Empowerment Mission, Trees for the Future, Rainforest Alliance, Amazon Frontlines, Yoga for Africa, Yoga for Foster Children & Orphans.
- **Partnered with global brands with Nike, GoPro, Vitamix, Puma, Banyan Tree, Waldorf Astoria & Marriott resorts**, as well as green living brands such as Sleep on Green, Manduka, Prana, Starboard SUP, One World Ayurveda, Cure Joy + more.
- **Honored by the Stanford Happiness Hall of Fame** and has presented at **prestigious platforms like the United Nations**, sharing her expertise on wellness and happiness.

NOTABLE PAST PARTNERSHIPS, SPONSORSHIPS & MEDIA COVERAGE:



MIRACLE TREES CHIEF COMMERCIAL OFFICER

Global Sales Leader, Investment Advisor and Professional Public Speaker

THEO DAVIES

Chief Commercial Officer



- **Theo Davies has over two decades of experience in sales leadership**, holding executive roles including Senior Sales Director at Cushman & Wakefield, COO at a top-ranked solar tech firm in Singapore, and Sales Performance Director at Oracle.
- **Senior Leader at Google**, most recently as **Head of Business Enablement for APAC and Japan**. President of Google's Public Speaking Academy and member of Google's Cloud Club placing him amongst the top 1% internationally.
- **Advised HNW and UHNW clients at DBS Private Bank, closing over \$100 million** in investment transactions and breaking the rookie sales record. Certified in Wealth Management by the Wealth Management Institute.
- **Regional Champion in public speaking** and awarded the **highest professional speaking designation from the National Speaking Association**, placing him among the top 1.5% of global professional speakers. Also a former international sportsman and actor in Crazy Rich Asians.

EDUCATION, NOTABLE PAST PARTNERSHIPS AND EXPERIENCES:



MIRACLE TREES HEAD OF OPERATIONS

Horticulture Expert, Founder of Backyard Farming Academy and Web3 & Metaverse Agriculture Pioneer

TATE DOOLEY
Head of Operations



- **Tate Dooley is a horticulture expert and educator**, passionate about empowering individuals to cultivate their own food and embrace sustainable gardening practices.
- **Founded Backyard Farming Academy**, providing accessible digital education on organic gardening and self-sufficiency, reaching a growing community of aspiring growers.
- **Pioneering the use of Web3, NFTs, and the Metaverse to revolutionize agriculture** and food systems, demonstrating a commitment to innovation and accessibility.
- Developed the "Key To Life" organic plant nutrient line, offering an **eco-conscious solution to enhance plant health and promote sustainable gardening practices**.
- Recognized for his contributions to **sustainable agriculture and technology**, speaking at the MEWS Awards and **receiving the prestigious 'Better World' Award**.

EDUCATION, NOTABLE PAST PARTNERSHIPS AND EXPERIENCES:



MIRACLE TREES GCC

Permaculture Expert, Founder of Phireon Global Partners

XAVIER HAWK
Head of Operations GCC



EXPERIENCE & BUSINESSES:

- **Xavier Hawk is a Permaculture expert and educator**, teaching, raising, and living on his permaculture farm in western North Carolina, Xavier Developed a thriving eco community.
- **Founded Colony Earth**, providing accessible hands on education on organic gardening and self-sufficiency, reaching a growing community of aspiring growers.
- **Founded Phireon Global Partners** financing and commercializing advanced eco tech out of the DoD space.
- **Pioneering the use of Blockchain, asset backed currencies, and Payments** for Communities around the world including the BRICS, and negotiating the first Blockchain Solution for a nation.
- Closed over \$200B in financing for organizations, and clients around the globe through **eco-conscious and sustainable Businesses**.
- Recognized for his contributions to **Permaculture, Payments, and Web 3**, speaking at Blockchain conferences around the world, and consulting for countries.



PHIREON
GLOBAL
PARTNERS

